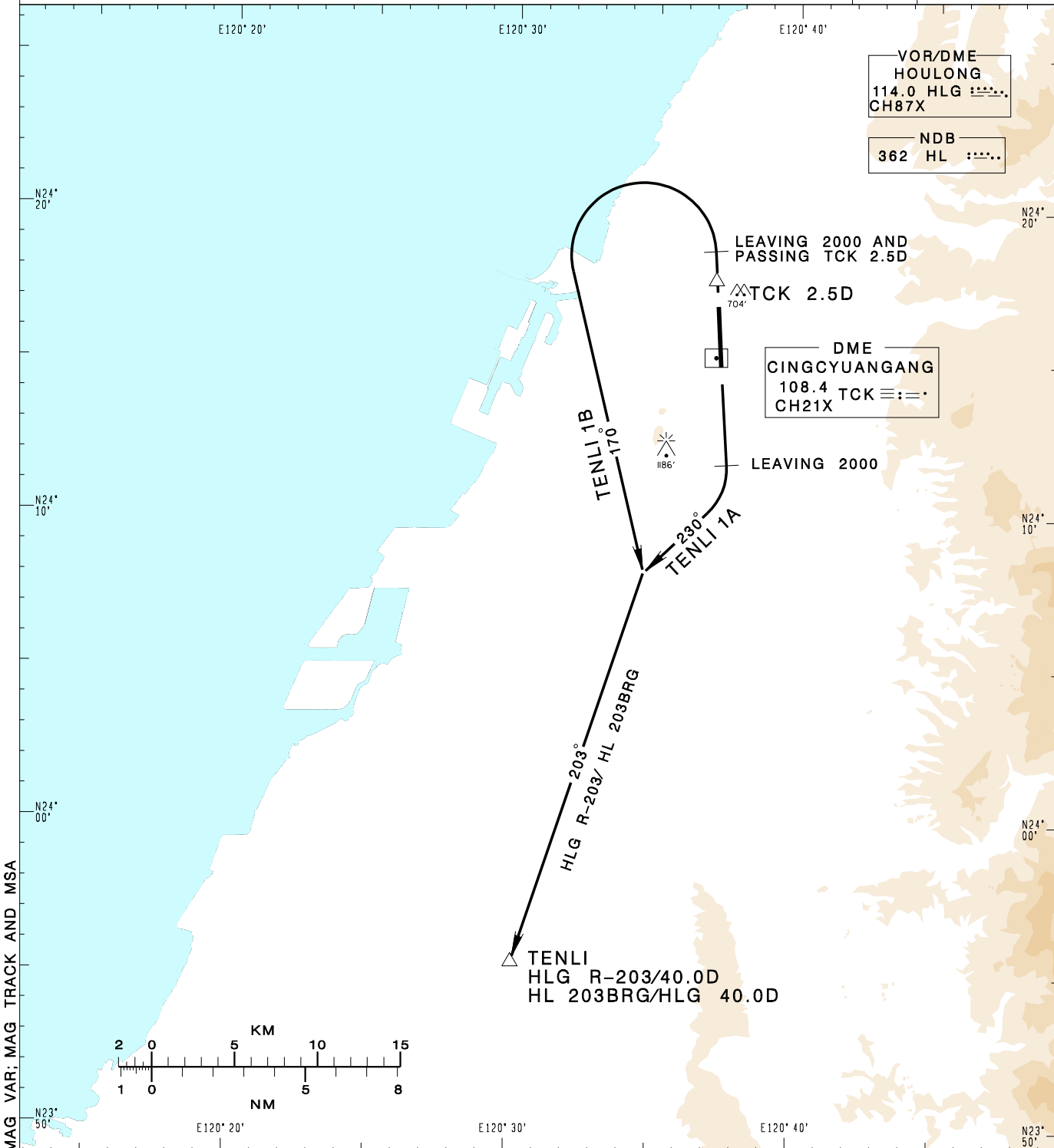


**臺中/清泉崗機場**  
TAICHUNG/CINGCYUANGANG AD

RCMQ SID  
TENLI 1A(RWY18)  
TENLI 1B(RWY36)

TAIPEI APP 130.1 129.6	TAICHUNG TWR 118.75 120.25	ATIS 127.75	VAR 5°W-2022 ↑	13600' MSA ARP 25NM
Apt Elev: 665'	Trans Level: FL130	Trans Alt: 11,000'		
BEARINGS ARE MAGNETIC; DISTANCES ARE NAUTICAL MILES; ELEVATIONS, HEIGHTS IN FEET				



CHANGES: UPDATE MAG VAR: MAG TRACK AND MSA

**TENLI ONE ALFA DEPARTURE**  
Depart on RWY HDG until leaving 2,000, then turn right HDG 230 to track HLG R-203/HL 203BRG to TENLI to join W4.

**TENLI ONE BRAVO DEPARTURE**  
Depart on RWY HDG until leaving 2,000 and passing TCK 2.5D, then turn left HDG 170 to track HLG R-203/HL 203BRG to TENLI to join W4.

**NOTE**  
1. TENLI 1A, TENLI 1B:  
Requires a minimum climb gradient of 5% (300ft/NM) until 2000ft.  
2. Caution close-in obstacles (trees) 704ft MSL, 150m northeast of RWY36 DER.